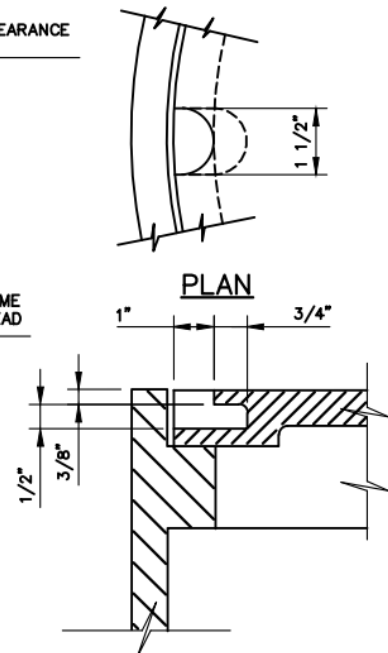
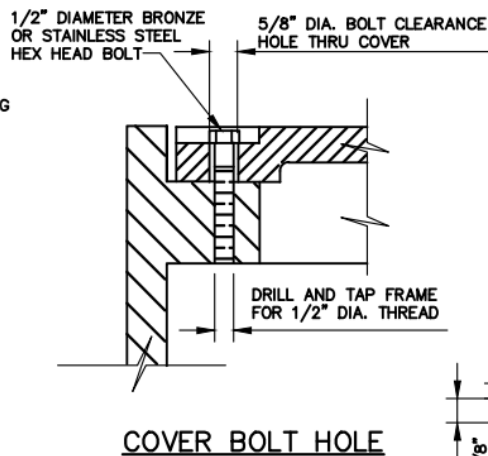


M.H. ANCHOR BOLT DETAIL
N.T.S.



SPECIFICATIONS :

ALL MATERIAL GRAY CAST IRON, A.S.T.M. A-48, CL30 SUITABLE FOR HIGHWAY LOADING
ALL FRAMES & COVERS SHALL BE COATED WITH COAL TAR PITCH VARNISH
COVER SHALL HAVE THE WORDS "PRA SEWER" CAST THEREON
FRAMES SHALL BE WATERPROOF AND COVER SHALL BE BOLTED WITH FOUR (4) 1/2"
COUNTERSUNK STAINLESS STEEL BOLTS MAKING A SEAL WITH A RUBBER "O" RING GASKET, OR EQUAL.
PROVIDE FOUR (4) ANCHOR BOLT HOLES, 1" DIA. MIN.

WATERPROOF MANHOLE FRAME & COVER
PREPARED FOR:
PERKASIE REGIONAL AUTHORITY

ANDERSEN
ENGINEERING
ASSOCIATES
INCORPORATED
306 NORTH FIFTH STREET, PERKASIE, PA
(215) 257-5711

DSN BY:	P.C.A.
CHK BY:	P.C.A.
DATE:	4/03/96
DWG NO.	PRA-S06